

Planning Grant Proposal for:

Open Spaces Sacred Places:
The Healing Power of Nature

University of Kentucky Creative Pathway



Prepared by:
UNIVERSITY OF KENTUCKY



September 1st, 2011

TABLE OF CONTENTS

1	<u>Cover Form</u>	2
2	<u>Point of View Statement</u>	6
3	<u>Project Narrative</u>	7
4	<u>Literature Review</u>	12
5	<u>Timeline</u>	14
6	<u>Budget and narrative</u>	15
7	<u>Attachments</u>	18

ABSTRACT

Combining the faculty research expertise of a major research university, the professional design experience of two nationally recognized landscape architecture firms, and individual perspectives of students, residents, and community leaders, we propose to plan a Creative Pathway and Portal for the University of Kentucky campus. This project will adaptively reuse an abandoned railroad spur, restoring its transportation use to connect campus to the wider world while renewing its brown and barren soil to support native plants and public art. This project will provide the center of Lexington with an open, urban landscape that, through the use of sustainable landscape practices, will promote physical and spiritual health through walking, meditation and reflection. Our design process will involve bringing the university community (students, faculty, and administrators) together with residents of the surrounding areas and community leaders experienced in the creation of transformative landscapes. This project will enable research that increases knowledge in the areas of best practices in campus planning, the design and implementation of sustainable landscapes in the urban environment, the use of public art and personal creativity to promote mediation, reflection and personal growth as well as the development of more accurate measurement of the social impact and individual happiness resulting from open spaces/sacred places.

2. POINT OF VIEW STATEMENT

Our point of view is informed by two basic perspectives. One is that the traditional college campus, whose greenspaces are designed and modeled after the cloisters of monasteries, create open spaces and sacred places that promote both contemplation and social engagement. Too often, however, these spaces are segregated from their surrounding environments. Urban campuses in particular are often cut off socially, contextually, and environmentally from the surrounding fabric of the city as campus designers have emphasized uniformity (one campus looks much the same as another), resource-intensive elements (manicured lawns and formal arrangements of non-native plants), and access by automobile. Our second perspective derives from the work of planners and activists such as Jane Jacobs, Tony Hiss, and Randy Hester who encourage us to understand how cities function as living, synergistic ecosystems (Jacobs), how public places within cities can restore our connection to our senses (Hiss), and to apply modern research methods to study the social, ecological, and aspirational effects of urban landscapes.

3. PROJECT NARRATIVE

1. Description of the Project

- *Statement of Need*

Many university campuses, like the University of Kentucky, were designed based on models of the medieval monastery, with buildings arranged around a central, landscaped quad. This environment was meant to stress the links of the intellectual pursuits of the university and the spiritual aspects of self-reflection and personal development. As the city has grown around the University of Kentucky, the campus now exists as an island within the urban fabric. Its edges are marked by signage and gateways that are scaled for automobile traffic. The borders emphasize the separation and demarcation; on one side there are the areas of the “town” and immediately stepping over the threshold, there is that of the “gown”. These margins are often sites of stress and dislocation as the congestion of traffic and the bareness of parking structures abuts the green, park-like setting of the traditional college campus. This stress and dislocation is intensified by the often insular planning process that drive private residential and retail development outside its boundaries and the University’s own, inward directed campus plans.

- *Intent, Purpose, Goals*

This project will integrate the University of Kentucky campus and surrounding urban fabric through the development of a Creative Pathway. An abandoned railroad spur that bisects what until recently has been a neglected, underused University-owned property will be our focus. This area was formerly an industrial/commercial part of Lexington, and the University property sits isolated and underutilized amidst surrounding areas of substantial residential redevelopment. We propose to lead a team of university faculty and students, together with community participants, to renew and restore this post-industrial landscape, creating a gateway and ritual passage that connects campus to Lexington’s larger urban fabric, particularly the dense residential development adjacent to the site. Our plan will incorporate sustainable landscapes, public art, and safe social areas promoting physical health (through walking), meditation and reflection. We intend to respect the history of the old railroad spur as a transportation corridor, adaptively reusing its linear nature as a pedestrian passageway. This passageway will be marked by a gateway or arrival point on its southern end and will connect to the new home of the Department of Art at its northern terminus. We envision a site that is spiritually transformational; a zone of transition from the hustle and bustle of the daily life to the spaces of learning, reflection, and creativity.

The spiritual, sacred, and transformational aspects of the site will evolve from its repurposing as a sustainable and creative landscape. Using the expertise in the Department of Landscape Architecture, the landscape design will emphasize sustainability. Showcasing native plants and rain gardens will provide laboratories for students to test new combinations of elements. The linear nature of the site will be punctuated with public art, providing structured elements that will encourage students and the public to pause, contemplate, and reflect. We will seek to include at least one world-class example of public art that will itself be a destination point, attracting visitors. The terminus of the pathway will be the new home of the Department of Art, with its classroom spaces and public galleries.

The focus on the new home of the Department of Art is important. Recently the University proposed to renovate one of the warehouses in this area to provide modern and safe facilities for art programs. In addition, the University approved a new general education curriculum that includes a requirement for all students to successfully complete a course in Creativity. These courses encourage students to learn about creativity in an active way, through hands-on experiences that require them to exhibit, perform, act, and demonstrate things they create. The University of Kentucky is the only public, flagship research university that places Creativity at the center of its general education curriculum. We believe this will lead to a dramatic increase in the number of students taking courses in art facilities. The passageway we propose will include one or more outdoor spaces or classrooms where students taking these courses might gather to publically perform or exhibit. Hence, these spaces will serve as spiritually transformational spaces, the locus of creative activity and personal self-reflection.

- *Intended Audience/Users*

The intended audience includes the university community, the residents of the surrounding neighborhoods, and the community at large. For students, faculty, and staff who make up the university community, the site will provide a space of spiritual transformation. Moving toward campus, the passageway will encourage mental and spiritual preparation for academic study; contemplation and self-reflection upon return and will be a potential site for transformational experiences in the display and performance of their own work. For residents in the immediate vicinity, the site will provide a refuge, a public green space serving as an escape from their apartments and the city grid; providing a safe space for strolling, promoting personal health and a sense of inspiration. For the community as a whole, this gateway will serve as a welcoming link to the university community, promoting greater cohesion between the state-supported university and the public that supports it. The space will be a destination for those citizens interested in sustainability and creativity featuring the research and creative activities of students and faculty engaged in design and the arts.

- *Proposed Site: Location, Size, and Description*

Our proposed site is on University-owned portions of the former Norfolk Southern railroad spur that connects Scott to Boliver Streets in Lexington, KY. This linear site runs approximately 800 feet, crossing a former commercial/industrial area that once served as a center of tobacco markets for the central Bluegrass Region, therefore holds particular historical, economic, and cultural interest. Over the last twenty years, the areas immediately adjacent to this site have been transformed through substantial private investment in residential neighborhoods containing both student apartments and high-end condominiums. The site includes the former Reynolds Tobacco Warehouse complex, currently used as storage and the present home of the UK Art Department. This area of campus has historically been seen as marginal to the University. This situation will change radically in the coming years with the construction the “Newtown Pike Extension” that will directly connect this area to two interstate corridors (1-75, 1-64). This extension will transform this area from a neglected “backdoor” to main campus into its new “front door,” an arrival point for the community. Current campus plans project its transition through intensive redevelopment for academic purposes. These plans are quickly coming to fruition as the University recently announced plans to purchase and renovate an additional neighboring warehouse into academic space devoted to the Department of Art.

2. Description of Proposed Team

- *Lead Grantee*

The lead grantee is the University of Kentucky, a land-grant institution located in Lexington, KY. The university qualifies as a tax-exempt charitable organization (See IRS letter).

- *Team Make-up*

The research leadership team is composed of faculty in UK’s College of Agriculture, Department of Landscape Architecture, Prof. Ryan Hargrove (Firesoul) and Prof. Carolina Segura as well as Chair of the Department of Art, Prof. Benjamin C. Withers. The Lead Research Team has received commitments from institutional and community partners representing the intended audiences of the project, including student leadership, representatives from the surrounding neighborhoods bordering the area, and a community facilitator.

Two award-winning landscape architecture and land planning firms will lead the conceptual design during the planning phase and drive the design to implementation if awarded. Design Workshop has been providing services for almost four decades to developers, property owners, government agencies and other clients engaged in improvements to the land. It has evolved a proprietary approach and distinct design culture that is renown nationally and internationally. Carman, a local firm, has been providing planning and design services to private and public clients in the Kentucky area for the past thirty years. The integration of landscape architecture, land planning, environmental planning, and civil engineer has gained the firm the reputation of meeting the demands of complex and challenging projects. Design Workshop will act as the

project lead and its involvement will transition to Carman as the project moves to construction documents and implementation.

Communication for this project will be directed by two partners. The first will be a local marketing firm who will be responsible to promote the design charrette to both students and the community-at-large in an effort to increase participation. They will also help to ensure the event is publicized through various media outlets. The second partner will be Van Meter Pettit, our community representative. He will serve as a liaison to ensure that the surrounding community remains actively involved throughout the design process.

- *Cross-disciplinary Philosophy*

The lead team will utilize the resources of various academic units at UK to comprise a working group for the purposes of this planning grant. Our philosophy will be the integration of art, landscape, activity, wellness, and community.

- *Work Plan: Design and Research Integration*

To ensure research and design integration, four meetings will be scheduled through the planning phase. A kick-off meeting to agree on goals, objectives, and design process; a pre-charrette meeting to discuss progress and prepare for the charrette; a charrette where all team members come together to listen to the community; and a post charrette to draw conclusions and prepare for the award submission will be scheduled. Moreover, research is part of the design team's philosophy. Design Workshop was born in academia and continues to operate in this manner. Kurt Culbertson has played a leadership role in defining the firm's DW Legacy Design® approach and the DW Legacy Design® Metrics, 'a discovery-oriented tool to help the project team and clients form a collective point of view about the goals and aspirations for a project and to measure success in meeting goals over time'. Metrics are grounded in the four Legacy Design categories and will be part of the research approach.

3. Description of Community Engagement Plan

Design Workshop believes a variety of public engagement tools help facilitate the planning and design process. The goal will be to actively engage the community in the visioning, validation and long term implementation of the plans that are developed by the study. At the end of the study, the community should be the primary advocate and torch bearer for the plan. The community should own the vision! A community-based charrette is a four-step process that includes: (a) listen, (b) present and explain, (c) listen again, and (d) build capacity for implementation. A series of exercises will include key pad polling devices to achieve clear and direct input, dot voting exercises, Facebook, QR coding and an open house forum will allow the community and campus to participate at numerous levels throughout the process.

4. Description of the Design Approach

- *Constraints and opportunities*

Anticipated opportunities presented by the site include connectivity in a rapidly developing urban environment with newly constructed housing and public transportation corridors. This connectivity will relate to a recently constructed pedestrian and bike trail that stretches throughout the city. The site, an abandoned railway spur, is a brownfield. This presents a unique challenge of reclamation and healing in order to bring it back in balance with nature.

The edges of campus have for years served as barriers to the community. Currently a lack of soft edges that welcome interaction and create a feeling of being a part of the surrounding urban environment exists. This edge of campus, which has for decades been the back door of campus, is now becoming the front door due to shifting land use and transportation networks. This is an opportunity to reach outward to the surrounding community.

The new University Core Curriculum requires all students to take a course in Arts/Creativity. The newly developed Fine Arts property will now be connected with main campus, as thousands of students each semester will visit this space to take classes.

- *Stakeholder Participation*

The Design Workshop Team's technical approach is based upon a philosophy that views

the Consortium as partners and active collaborators in the planning and design process. Our success depends on an integrated public engagement process. It intends to create an authentic plan and implementation based upon a democratic process including the full spectrum of citizens, civic leaders, government officials, and elected officials, as well as the technical expertise of consultant team members located in Lexington and elsewhere.

- *Design Attitude*

The people of Lexington and University of Kentucky know their campus and users in more depth than any consulting team. The community, if provided with a vibrant, inclusive, and transparent planning process, are best-suited to articulate their hopes for the future of this site. The vision they articulate will be unique for the campus and by design, our process enhances this vision and transforms it into an actionable plan. By giving voice to the views of the citizens, providing them with quality information upon which to base their decisions, and constructing a framework for education and collaboration, a plan that will be embraced and supported by the people and University will have great potential to be realized.

5. Research

The research questions this project will address center on the creation of an inspiring and sustainable transition between an area of recent, dense private residential space and the public spaces of the University campus. This overall focus will be broken down into component parts, each with its own research focus. These parts include campus design and landscape architecture; the creation and maintenance of a sustainable landscape; and how to measure the impact of the landscape design on the happiness and well-being of its intended audiences.

Research into campus design will focus on how to integrate the two primary uses of the site as a zone of transition and reflection. Questions will address the selection of gateway elements that simultaneously create an arrival point for the University, signaling its presence to the outside community while creating a threshold that welcomes and draws pedestrians. Elements of the design must conform to standards and principles established by University planning officials yet signify the spiritual, contemplative focus of this particular site. This research will address the shortcomings of traditional campus planning, seeking to create a zone of transition rather than a barrier to entry. The challenge here is to scale the gateways to welcome and encourage pedestrians, bring people in from an arrival point and transition from outside to inside.

Another research focus will stem from the history of the site as an abandoned railroad spur line. The linear nature of the site suggests that lessons learned from other contemporary projects, such as the Highline project in New York City, may be incorporated. Like Highline, our research plan will seek to incorporate the sites' past as a transportation corridor into its future as a linear park. However, our site presents its own unique challenges such as its uneven and changing elevation from surrounding areas, its heavily compacted soil, immediate proximity to commercial buildings and University physical plant, as well as its potential to support University curricular initiatives. Our research will include questions of how to redevelop the linear space in order to accommodate a flow of pedestrian traffic while establishing elements or zones within the design that promote contemplation and reflection (e.g. public art, outdoor rooms, or the incorporation of calming sound effects or music). These elements will transform the site from a pathway to a transformational passageway that slows the rhythms of daily life, calms those transported by the path, and encourages spiritual contemplation and meditation.

A third research focus will be the sustainability of the landscape. Students, staff and faculty on the UK campus have developed a significant interest in sustainability and this focus will link our project directly to the concerns of an important audience. We also recognize that sustainability can be a spiritual concept, a principle that requires the design to include elements that are informed by adaptive reuse (the abandoned railroad becomes a spiritual passageway), respects the innate context (the use of native plants, for example), and is committed to a husbandry of resources (the conservation of rainwater and energy). Researchers from UK's College of Agriculture have substantial experience developing organic practices and sustainable techniques

for commercial farming. Our project seeks to utilize this expertise and turn its attention the campus landscape. Many campuses, including UK, are defined as lush green oases of manicured lawns and hedges, protected formal plantings of annual flowers, crossed by concrete walkways. The landscape is resource intensive requiring a large grounds crew to plant (often seasonally) use lawn mowers, leaf-bowers, and other noisy and polluting gas-powered machinery to maintain. It uses a lot of water and often creates rain-water runoff and erosion. We will provide a laboratory for the use of native plants requiring less water and maintenance and structural materials that generate less rainwater runoff.

Our fourth area of research centers on the broader view of sustainability, particularly the social dimensions of the landscape. As Culbertson recently argued, making “a limited number of measures synonymous with sustainable design is short-sighted. A project can save water or cut energy use, yet contribute little to the success of a community culturally or economically.” (Building Better Metrics, 121). Our project will reflect the Sustainable Sites Initiative promulgated by ASLA, which includes factors such as social interaction and outdoor physical activities as part of its metrics. But as Culbertson notes, developing ways of measuring qualitative aspects of “happiness” (community involvement and social capital) are notoriously difficult. A principle focus of our research program will be to study how to develop these measures.

- *Research Questions*

1. We will use the framework that Hester established to guide the exploration of campus/community, including the impact of engaging community in the design process as well as a comprehensive investigation of student performance as it relates to community and campus interaction.

2. We will build upon the quantitative research conducted by SITES, Kurt Culbertson, and Kaplan and Kaplan to explore the impact of sustainable sites on health and wellness, measure the social dimensions of landscape, and restorative environments focusing specifically on mental fatigue in student population.

3. We will study the transformational experience associated with nature and how community benefits from social interaction within nature.

- *Probable approaches*

This project will present at least three approaches for ongoing study. As a sustainable landscape, the Creative Pathway will provide a laboratory for faculty and students from the College of Agriculture to test combinations of native plants and develop sustainable practices (such as water capture, periodic maintenance) unique to the public, college campus setting.

A second area of ongoing study will center on the element of public art. We won't simply select an artist who will create a pre-fabricated sculpture that is simply dropped into the site. Instead, we will initiate a creative research project that will focus on community participation in the subject, form, design, and placement of a piece of public art. The definition of art may be extended to include sound sculpture and sound environments, and we will include on the project team a music therapist. Also we will select some spaces that will be used for impermanent, changing works. Some of these will be for student work (UK currently has a program that installs work of advanced sculpture students on campus; we will expand this program). We will also create rooms or spaces for the work of general population students, those taking arts and creativity courses, whose classwork requires spaces for performance and exhibition of work. Since ancient times, cultures have marked gateways and points of transition with art-work that highlights and amplifies the nature of the site.

Our third area of the on-going study will center on the measurement of the social capital (defined qualitatively as a sense of belonging and happiness). This will entail the development of measurement instruments (surveys, interviews, observations by trained researchers). These measurements in turn will be shared with the team members involved in landscape architecture, sustainable design, and public art. The central learning outcomes will define a working relationship between the University and surrounding community and how to measure the impact of the resulting spiritual landscape on community cohesion and happiness.

4. LITERATURE REVIEW

The following literature review helps establish a research framework for this project. Proposed areas of inquiry include campus / community interaction, sustainable landscapes, social dimensions of landscape, psychological impact of nature, restorative environments, and the building of community through nature.

Randy Hester was one of the founders of the research movement to apply sociology to the design of neighborhoods, cities and landscapes. Much of his work aims to make the environment and people's well-being central to the design process by strengthening the role of civic involvement. He argues that community participation in design and planning is paramount. It brings to the forefront the social, economic, and ecological issues at stake, as well as the dreams and hopes embodied in the spaces to be redesigned.

The Sustainable Sites Initiative (SITES), a new rating system now in the pilot testing phase, can be used to answer the question: How can we measure the success of a landscape? SITES is a useful tool for understanding and quantifying the range of ecosystem services landscape provide. However, beyond water and soils, areas like human health and wellbeing are still very difficult to quantify at the landscape scale. It is believed that sustainable landscapes create microclimates that enable people to be outdoors comfortably longer, increase productivity at work, and improve social interaction but there currently is a lack of hard data confirming these assertions.

Kurt Culbertson, FASLA is principal, of Design Workshop Inc., a landscape architecture, land-planning and urban-design firm. For the past decade Kurt and others at Design Workshop have established effective metrics for a variety of design outcomes. In his recent article in Landscape Architecture Magazine he states that existing measurement systems don't address the social dimensions of landscape¹. They have found that factors such as safety and health are relatively easy to measure while others such as happiness remain difficult to quantify.

Another focus of the research will be the positive psychological experiences associated with nature in an OSSP site. People with access to nearby natural settings have been found to be healthier overall than other individuals. The longer-term, indirect impacts of 'nearby nature' also include increased levels of satisfaction with one's home, one's job and with life in general². Kaplan and Kaplan described 'restorative environments' as those settings that foster recovery from mental fatigue³. According to theirs and other studies, restorative environments require four elements: fascination, a sense of being away, extent or scope, and compatibility with an individual's inclinations^{4,5}. Urban green spaces are ideal for restorative experiences due to their ability to satisfy the four elements described above^{6,7,8,9,10}.

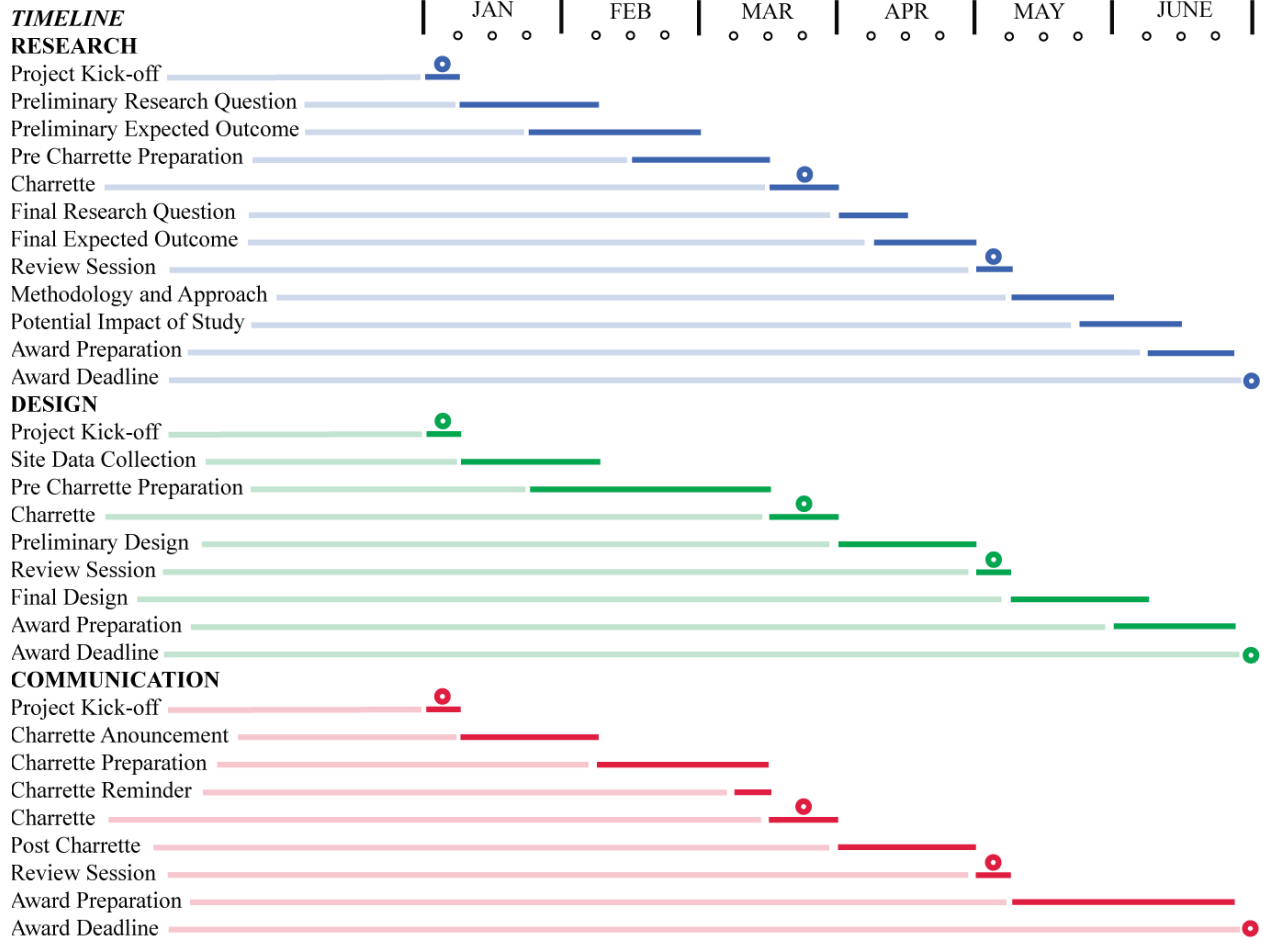
The community benefits of social contact within nature in urban settings are worthy of examination as well. Community spaces provide opportunities for socializing with and learning from community members that may normally be unavailable. This aids community cohesion by dissolving prejudices about race, and economic or educational status^{11,12}. Civic volunteering in natural environments may be another example of enhanced health and well-being made possible not only through contact with nature, but through the social connection that arises from working on a common community task in a local natural area.

References

- Condon, P. 2008. Design Charrettes for Sustainable Communities. Island Press.
- Cooper Marcus, C. and T. Wischemann. 1987. Outdoor Spaces for Living and Learning. Landscape Architecture 78: 54-61.
- Cooper Marcus, C., and C. Francis eds. 1998. People Places: Design Guidelines for Urban Open Space. Second Edition. New York: Wiley.
- 1. Culbertson, Kurt. 2011. The Fuller Measure - Building Better Metrics: The Synthesis of Economics, Environment, Community and Art. Landscape Architecture Magazine. (4): 120-128.
- Fleming, R.L. 2008. The Art of Placemaking: Interpreting Community Through Public Art and Urban Design. Merrell Publishers

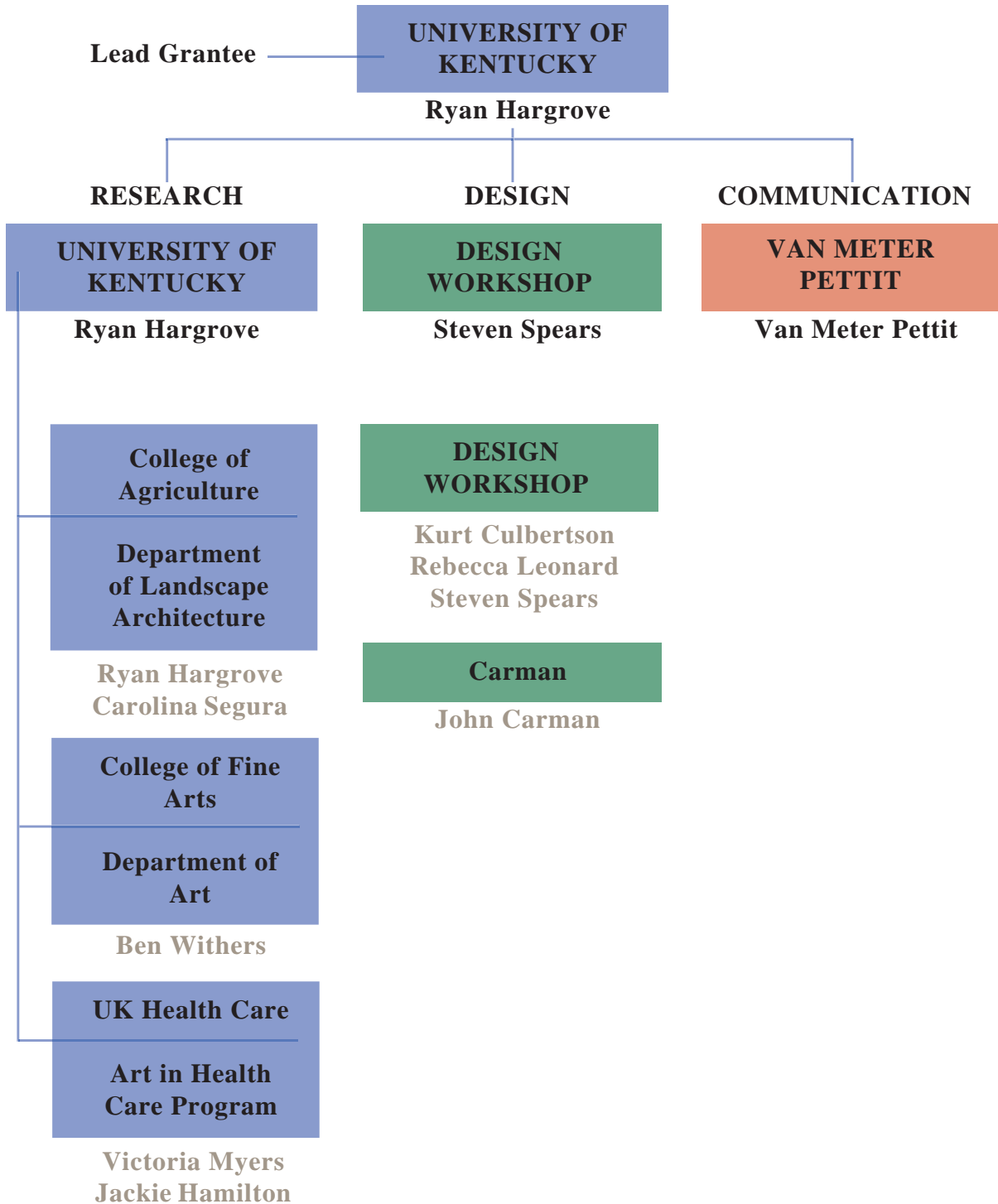
- Francis, M., L. Cashdan, and L. Paxson. 1984. *Community Open Spaces*. Washington, DC: Island Press.
- Francis, M. 1999. Proactive Practice: Visionary Thought and Participatory Action in Environmental Design. *Places* 12, 1: 60-68.
- Gehl, J. 1987. *The Life Between Buildings*. New York: Van Nostrand Reinhold.
- Gobster, P.H. and B. Hull. 2000. *Restoring Nature*. Washington, DC: Island Press.
- 5. Hartig, T., Mang, M. and Evans, G. W. 1991. Restorative effects of natural environment experiences. *Environment and Behavior*, 23, 3–26.
- Hester, R. T. 1975. *Planning Neighborhood Spaces with People*. New York: Dowden Hutchinson & Ross.
- Hester R. T. 1990. *Community Design Primer*. Ridge Times Press.
- Hester R. T. 2008. *Design for Ecological Democracy*. MIT Press.
- Hester, R. T. Social Values in Open Space Design,” *Places*, 6(1): 68-77.
- Johnson, J. 2000. *Design for Learning: Values, Qualities and Processes of Enriching School Landscapes*. LATIS Document. Washington, DC: American Society of Landscape Architects.
- 2,4,6. Kaplan, R. and Kaplan, S. 1989. *The Experience of Nature: A Psychological Perspective*. Cambridge University Press, Cambridge, New York.
- 7. Kaplan, R. and Kaplan, S. 1990. Restorative experience: the healing power of nearby nature. In Francis, M. and Hester, R. T., Jr (eds) *The Meaning of Gardens: Idea, Place and Action*. The MIT Press, Cambridge, pp. 238–243.
- 8. Kaplan, R. 1992a. The psychological benefits of nearby nature. In Relf, D. (ed.) *Role of Horticulture in Human Well-being and Social Development: A National Symposium*. Timber Press, Arlington, Virginia, pp. 125–133.
- 9. Kaplan, S. 1992b. The restorative environment: nature and human experience. In Relf, D. (ed.) *Role of Horticulture in Human Well-being and Social Development: A National Symposium*. Timber Press, Arlington, Virginia, pp. 134–142.
- 3,10. Kaplan, S. 1995. The restorative benefits of nature: toward and integrative framework. *Journal of Environmental Psychology*, 15, 169–182.
- Kaplan R., S. Kaplan, and R.L. Ryan. 1998. *With People in Mind: Design and Management of Everyday Nature*. Washington, DC: Island Press.
- 11. Lewis, C. A. 1990. Gardening as a healing process. In Francis, M. and Hester, R. T., Jr (eds) *The Meaning of Gardens: Idea, Place and Action*. The MIT Press, Cambridge, pp. 244–251.
- 12. Lewis, C. A. 1996. *Green Nature/Human Nature: The Meaning of Plants in our Lives*. University of Illinois Press, Urbana, Chicago.
- Maller, C., Townsend, M., Pryor A., Brown P and St. Leger, L. Healthy nature healthy people: ‘contact with nature’ as an upstream health promotion intervention for populations. *Health Promotion International*. 21 (1): 45-54.
- Putnam, Robert. 2000. *Bowling Alone*. New York: Simon & Schuster.
- Whyte, William H. 1980. *The Social Life of Small Urban Spaces*. Washington D.C.: Conservation Foundation.
- Wolf, K. 1998. Urban nature benefits: psycho-social dimensions of people and plants. Fact sheet from course in Human Dimensions of the Urban Forest. University of Washington, College of Forest Resources, Center for Urban Horticulture.
- Wolf, K. 2005. Civic Nature Valuation: Assessments of Human Functioning and Well-Being in Cities. In: *Forging Solutions: Applying Ecological Economics to Current Problems*, Proceedings of the 3rd Biennial Conference of the US Society for Ecological Economics (July 20-23, 2005). Tacoma, WA: Earth Economics.
- Zeisel, J. 2006. *Inquiry by Design: Environment/Behavior/Neuroscience in Architecture, Interiors, Landscape, and Planning*. W.W. Norton.

5. TIMELINE



7. ATTACHMENTS

TEAM ORGANIZATION



RESEARCH TEAM LEADERS

UNIVERSITY OF KENTUCKY

Mission Statement

The University of Kentucky is among a handful of public research universities in the country that have the full range of academic offerings, from agriculture to medicine and from engineering to fine arts, on one contiguous campus. Here, the opportunities for interdisciplinary research and inter-professional training are boundless. Thanks to a State mandate, the University of Kentucky is beginning an exciting phase of growth in size and scope, so this is a particularly auspicious time to become involved with this university.

The University has set a course to become a model for land-grant universities of the 21st century, fully engaging its teaching and research resources in the service of the state and the Nation. Improving people's lives through excellence in education, research and creative work, service, and health care is at the core of its mission. As Kentucky's flagship institution, the University plays a critical leadership role by promoting diversity, inclusion, economic development, and human well-being. Its vision is to become one of the nation's 20 best public research universities.

College of Agriculture
As a land-grant institution, the College offers access to knowledge and learning for citizens and students throughout the Commonwealth. Research, teaching, and extension programs are part of a national system that maintains a statewide presence and links local, state, and global issues. The College plays a predominant role in agriculture, food, and environmental systems, key components of Kentucky's economic future.

College of Fine Arts
To create, to think critically, to manage, and to continually experiment and learn—these are the core abilities that the College of Fine Arts' majors and programs offer. In this process of making, appreciating, and managing the arts, it continues to serve the mission of the University by making a vital contribution to the quality of life in the Commonwealth and in other communities.

Arts in Health Care Program
The program includes art in all its forms. Its mission is to create an environment of care and to focus on the spiritual and emotional well-being of our patients, families, caregivers and staff. The program recognizes the arts and the artists as powerful and positive forces in the healing process.

COLLEGE OF AGRICULTURE

DEPARTMENT OF LANDSCAPE ARCHITECTURE

RYAN HARGROVE
Assistant Professor

Ryan Hargrove received his doctoral degree in design from North Carolina State University in 2007. At NC State University he conducted research in design education, examining how to enhance the creative thinking of design students. Ryan is currently continuing several research projects on creative thinking and his most recent findings have led to the creation of a course that is currently being implemented as a general education requirement at the University of Kentucky. Ryan currently teaches fourth year design studios as well as the creative thinking course entitled Living on the Right Side of the Brain. His future research involves the development of innovative teaching methods. This area of research encompasses design pedagogy, creative thinking, metacognition, and technology.

Ryan received he received a Master of Landscape Architecture degree from the University of Florida. His master's thesis entitled "Remembering the Past Designing the Future" studied healing gardens and was recognized at the 2005 National Alzheimer's Conference in Chicago, Illinois. Working in collaboration with the Alzheimer's Association and the American Society of Landscape Architects Ryan studied a series of memory gardens across the country and developed a set of future design guidelines.

Education

North Carolina State
University College of
Design, Raleigh, North
Carolina
Doctorate of Philosophy in
Design, 2007

University of Florida
College of Design,
Construction and Planning,
Gainesville, Florida
Master of Landscape
Architecture, 2004

University of Kentucky
College of Agriculture,
Lexington, Kentucky
Bachelor of Landscape
Architecture, 2002

Honors / Awards and Recognition:

Architectural Research
Centers Consortium
(ARCC) King Medal for
Excellence in Architectural
+ Environmental Design
Research, 2008

This award is given to one student per ARCC member school. Selection is based upon criteria that acknowledge innovation, integrity, and scholarship in architectural and/or environmental design research.

Publications:

Refereed Journal Articles

Hargrove, R. (2012). Assessing the long-term impact of a metacognitive approach to creative skill development. *Journal of Technology and Design Education*, 22(1/12), 1-29. doi: 10.1007/s10798-011-9200-6

Hargrove, R. (2012). Fostering Creativity in the Design Studio: A Framework Toward Effective Pedagogical Practices. *Journal of Art, Design & Communication*, 10(1), 7-30.

Book Chapters

Hargrove, R. (2011). The Creative Classroom: A Model for Developing Creative Students. In H. Blythe & C. Sweet (Eds.), *It Works for Me, Creatively: Shared Tips for the Classroom* (pp. 47-55). New Forums Press.

Hargrove, R. (2011). Design Thinking is Creative Thinking. In H. Blythe & C. Sweet (Eds.), *It Works for Me, Creatively: Shared Tips for the Classroom* (pp. 27-31). New Forums Press.

Refereed Conference Proceedings

Hargrove, R. (2009). The Role of Technology in Developing Students' Creative Thinking Abilities. *International Conference of Education, Research and Innovation*, (pp.4842-4851).

Hargrove, R. (2008). Creating Creative Designers: Assessing the Short and Long-Term impact of Metacognitive Skill Development, *European Council of Landscape Architecture Schools* (pp. 243-251).

Conference Presentations:

Hargrove, R. (2012). "The Creative Classroom: Exploring the Relationship Between Reflective Practice and Creativity," Council of Educators in Landscape Architecture, University of Illinois at Urbana-Champaign.

Hargrove, R. (2011). "Assessing the Long-Term Impact of a Metacognitive Approach to Creative Skill Development," Council of Educators in Landscape Architecture, Los Angeles, CA.

Hargrove, R. (2010). "Inquire Within: Living on the Right Side of the Brain," Kentucky Conference on the Scholarship of Teaching and Learning, Lexington, KY.

Hargrove, R. (2009). "The Role of Technology in Developing Students' Creative Thinking Abilities," International Conference of Education, Research and Innovation, Madrid, Spain.

Hargrove, R., Rice, A. (2009). "Developing Awareness for Productive Creativity," Council of Educators in Landscape Architecture, Tucson/Phoenix, AZ.

Hargrove, R., Rice, A. (2008). "Assessing the Short and Long-Term impact of Metacognitive Skill Development on Creative Abilities of Design Students," European Council of Landscape Architecture Schools, Alnarp, Sweden.

DEPARTMENT OF LANDSCAPE ARCHITECTURE

CAROLINA SEGURA
Lecturer

Carolina arrived as a Lecturer at the University of Kentucky in 2011 to teach studio and digital design. Prior to starting at University of Kentucky, she obtained a full scholarship at University of Cincinnati, Ohio, to pursue a Master of Community Planning. After graduation in 2010 Carolina stayed in the Cincinnati area to work as an Adjunct Instructor at the University of Cincinnati and work for her studio in the design of street corridors in Cincinnati and Dayton

Prior to her teaching experience, Carolina worked at Design Workshop, an award-winning landscape architecture and urban planning firm, between the years 2002 and 2008. While at Design Workshop, she worked in an extensive variety of projects types and scales. Carolina was a key piece in the design and production of graphic documentation for master plans and residential projects. One of the major accomplishments came while working in the design, construction document production and construction administration of one of the largest high-end residential ranch projects in the Aspen area.

Carolina arrived at Design Workshop in 2002 after having finalized her certificate in Landscape Design and Environment in the Universidad Nacional de La Plata, Buenos Aires, Argentina. Previous to this she graduated as an Architect in the Universidad Catolica de Cordoba, Cordoba, Argentina, where she acquired knowledge in architecture, landscape architecture and planning. Her previous experience in Argentina included architecture, landscape, and furniture design and construction observation for residential projects

Selected Project Experience:

3rd Street Corridor Revitalization, Dayton, Ohio ^
Price Ave. Corridor. East Price Hill. Cincinnati ^
Dignitas Mexico Atacomulco, Mexico *
Hurst Ranch Aspen, Colorado *
Duckworth Residence Aspen, Colorado *
Goodman Residence Aspen, Colorado *
Ameya Preserve Livingston, Montana *
James Island British Columbia, Canada *
Lot 3 Saudi Granite Sculptures Aspen, Colorado *
Aspcol Aspen, Colorado *
Crown Residence Aspen, Colorado *
The Glades at Big Mountain Whitefish, Montana *

Education

Master of Community Planning. University of Cincinnati. School of Planning. College of Design, Architecture, Art and Planning. Cincinnati, Ohio. USA. 2010

Certificate in Landscape Design and Environment School of Agriculture and Forest Science Universidad Nacional de La Plata. Buenos Aires, Argentina.

BA (Bachelor of Architecture) Universidad Catolica de Cordoba. Cordoba, Argentina.

Certification

CSI – Construction Specifications Institute Examination: CDT – Construction Documents Technologist.

LARE. Sections A and B

Awards

University Graduate Scholarship, University of Cincinnati. 2008.

Research

Increasing Quality of Low- Income Housing Settlements: ‘Mi casa, Mi Vida, y nuevos Barrios’ Case Study. Cordoba. Argentina

* Projects while at Design Workshop

^ Projects with CS Land Studio

COLLEGE OF FINE ARTS

DEPARTMENT OF ART

BENJAMIN C. WITHERS
Professor and Chair

Withers has served as Chair of the Department of Art since 2004, managing a budget of \$2.5 million, supporting 38 faculty/staff, 340 undergraduate and graduate majors. The diverse programming includes courses and degrees in Art Education, Art Studio, and Art History. Notable achievements as Chair include leading the Department's efforts to gain accreditation from the National Association of Schools of Art and Design, the addition of nine new faculty lines, revision of the undergraduate curriculum, and the development of courses in Creativity and the Arts for the UK Core (the university's new general education requirements).

As Chair, Withers has worked closely with UK's Physical Plant Department, its Environmental Health and Safety Offices and the University Fire Marshal to improve classroom and Art Studio facilities. As a result of these efforts, the Department's facilities needs have risen to the top of the University's Capital list, resulting in nearly \$2 million for renovation of existing facilities and the proposal to purchase and renovate a new Art Studio Building (\$14.7 million).

Withers received his Ph.D. in Art History at the University of Chicago, where he developed research interests in early medieval art, with a particular focus on Anglo-Saxon manuscripts. His work on the illustration of biblical texts, the construction and design of illustrated books and, more recently, issues of gender and monastic identity in the early Middle Ages has appeared in several leading scholarly periodicals, including the *Art Bulletin*, *Anglo-Saxon England*, and the *Old English Newsletter*.

He has also co-edited two volumes of essays, one devoted to the *Old English Hexateuch* (co-edited with Rebecca Barnhouse, Kalamazoo, 2000) and the other an examination of the attitudes toward gender and the human body in Anglo-Saxon England (*Naked Before God*, co-edited with Jonathan Wilcox, West Virginia, 2003) while his monographic study, *The Illustrated Old English Hexateuch, Cotton Ms. Claudius B.iv: The Frontier of Seeing and Reading in Anglo-Saxon England* was published the University of Toronto Press in 2007. His work has been supported by the National Endowment for the Humanities, the Ameritech/SBC Foundation, the Whiting Foundation, and Indiana University President's Arts and Humanities Initiative, among others.

Education

1994 Doctor of Philosophy in Art History, University of Chicago, Chicago, IL.

1987 Master of Arts in Art History, University of Chicago, Chicago, IL.

1986 Bachelor of Arts in Art History, Carleton College, Northfield, MN.

Experience

Administrative Positions

2004 Chair, Department of Art, University of Kentucky, Lexington, KY.

2002-2004 Assistant Dean of Instruction, Indiana University South Bend

Faculty Positions

2008 Professor, Department of Art, University of Kentucky, Lexington, KY.

2004-2008 Associate Professor (with tenure). Department of Art, University of Kentucky, Lexington, KY.

2000-2004 Associate Professor, Indiana University South Bend

1994-2000 Assistant Professor, Department of Art, Indiana University South Bend

Books

2007 *The Illustrated Old English Hexateuch, Cotton Ms. Claudius B.iv: The Frontier of Seeing and Reading in Anglo-Saxon England*. Studies in Book and Print Culture. The British Library and the University of Toronto Press

2003 *Naked Before God: Representations of the Unclothed Body in Anglo-Saxon Art and Literature*. Co-edited with Jonathan Wilcox. Medieval European Studies III. Morgantown, West Virginia University Press

2000 *The Old English Hexateuch: Cultural Contexts and Critical Approaches*. Co-edited with Rebecca Barnhouse. Publications of the Richard Rawlinson Center. Kalamazoo, MI: Medieval Institute Publications

Articles and Book Chapters

2011 "Anglo-Saxon Visual Culture." In *A Handbook to Anglo-Saxon Studies*, ed. Renée R. Trilling and Jacqueline A. Stodnick. Wiley-Blackwell, forthcoming.

2010 "Satan's Mandorla: Translation, Transformation, and Interpretation in Late Anglo-Saxon England." In *Style and Meaning in Insular and Anglo-Saxon Art*, ed. Colum Hourihane. University Park: Penn State University Press/Index of Christian Art, forthcoming.

2003 "Forward: Uncovering the Body In Anglo-Saxon England," in *Naked Before God: Representations of the Unclothed Body in Anglo-Saxon Art and Literature*, ed. Wilcox and Withers.

2000 "A Sense of Englishness: Claudius B.iv, Colonialism, and the History of Anglo-Saxon Art in the Mid-Twentieth Century," in *The Old English Hexateuch: Cultural Contexts and Critical Approaches*, ed. Barnhouse and Withers.

1999 "Unfulfilled Promise: The Rubrics of the Old English Prose Genesis," *Anglo-Saxon England* 28 (1999): 111-139.

1999 "A Secret and Feverish Genesis: The Visual and Verbal Prefaces in the Old English Hexateuch," *The Art Bulletin* 81 (March 1999): 54-71.

Works of Reference

2009 "Art and Architecture: Merovingian." In *the Oxford Dictionary of the Middle Ages*, ed. Robert Bjork. Oxford: Oxford University Press, forthcoming.

2009 "Architecture: Anglo-Saxon." In *the Oxford Dictionary of the Middle Ages*, ed. Robert Bjork. Oxford: Oxford University Press, forthcoming.

2004 "Northern Europe 1300-1400." In *Atlas of World Art*, ed. John Onians. London: Lawrence King Publishing, pp. 112-113.

2004 "Southern Europe 1300-1400." In *Atlas of World Art*, ed. John Onians. London: Lawrence King Publishing, pp. 114-115.

1998 "Art, Romanesque," in *Medieval England: An Encyclopedia*, ed. Paul Szarmach et al. New York: Garland, 1998, pp. 88-90.

Grants and Awards

2003 Indiana University President's Arts and Humanities Initiative.

2002 Chancellor's Research Support Grant. Indiana University

2001 National Endowment for the Humanities, Summer Seminar Fellowship, Anglo-Saxon Manuscripts and Texts, British Library, London, England

2001 Ameritech Foundation Fellow, Indiana University

1999 Faculty Research Grant, Indiana University South Bend

1998 Grant-in-Aid of Research, Indiana University South Bend

1997 Summer Faculty Fellowship, Indiana University South Bend

1997 Curriculum Development Grant, Indiana University South Bend

1996 National Endowment for the Humanities, Summer Seminar Fellowship, Hebrew University, Jerusalem

1995 Summer Faculty Fellowship, Indiana University-South Bend

1993 Whiting Foundation Dissertation Year Fellowship

1991 University of Chicago Overseas Dissertation Research Fellowship

UK ARTS IN HEALTH CARE PROGRAM

VICTORIA MYERS
Chief Development Officer

Victoria Myers is the Chief Development Officer for UK HealthCare at University of Kentucky. Over the past five years in this role she has been responsible for fundraising activities within the clinical and hospital enterprise as well as the College of Medicine. She has played a leadership role in the establishment of UK HealthCare's Arts in HealthCare program, working with local partners to incorporate music, performance and visual arts as well as music therapy into the health care environment at UK. Her career in fundraising and management spans thirty years and includes serving as a Vice President for Development at University of Miami Medical Center in Miami, Florida and World Wildlife Fund in Washington, DC.

Experience

- *University of Kentucky, UK HealthCare, Lexington, KY 2006 to Present.* Chief Development Officer.
- *American Prairie Foundation, Bozeman, Montana 2004 to Present National Fundraising.* Director.
- *University of Miami, Leonard M. Miller School of Medicine, Miami, Florida. 2002 to 2004.*
 - Assistant Vice President for Medical Development and Alumni Relations 2003 to 2004.
 - Executive Director of Development and Campaign Director 2002 to 2003.
- *Pineland Partners LLC, Homestead, Florida 2002 to 2005.* Principal Partner.
- *World Wildlife Fund, Washington, D.C. 1997 to 2002.* Vice President for Development.
- *Rosenstiel School of Marine and Atmospheric Science 1989 to 1997. University of Miami, Coral Gables, Florida.*
 - Executive Director, Center for Marine and Environmental Analyses 1994 to 1997.
 - Director of Development and External Relations 1989 to 1994.
- *United Way of Dade County, Miami, Florida 1982 to 1989.*
 - Vice President, Strategic Planning and Marketing Division 1989.
 - Director of Communications 1984 to 1989
 - Media Relations Director 1982 to 1984
 - Communications Associate 1980 to 1981
- *Southeast Banking Corporation, Miami, Florida 1981 to 1982.* Corporate Public Relations Specialist
- *Capitol Publications, Washington, D.C. 1979.* Associate Editor

Education

University of Miami,
Rosenstiel School of
Marine and Atmospheric
Science

1996 to 1997 Extensive
graduate coursework in
marine affairs and environ-
mental policy.

Indiana University of
Pennsylvania, Indiana, PA

1978 Bachelor of Arts
degree, Journalism and
Political Science.

UK ARTS IN HEALTH CARE PROGRAM

JACKIE HAMILTON
Director, Arts in Health Care

Jackie Hamilton comes from a communications and design background with a MA in English. She has worked in advertising agencies and corporate communications for over 30 years and came to UK HealthCare in 2006 to lead development communication efforts in support of the new UK Albert B. Chandler Hospital. A lifelong involvement in the visual arts and dance connected her to the Arts in HealthCare program. Jackie officially assumed the responsibilities of Director of the Arts Program in March, 2011. Jackie implemented and managed international calls for Pavilion A and has curated and installed the UK HealthCare collection to date. As the program becomes a reality the focus will shift to interactive and performing arts.

Experience

2011 – Present. UK HealthCare. Lexington, Kentucky
Director UK Arts in HealthCare Program. Implemented, managed and installed International call for Pavilion A and has curated and installed the UK HealthCare collection to date. Currently writing policies and developing strategies to implement interactive art and performing art programs.

2006— 2011. UK HealthCare. Lexington, Kentucky
Development Communications Manager/ Art Program Director. Oversee all communication materials supporting development, the new hospital and the art program. Manage and implement the art program, staff the art committee.

2001— 2003. Ott Communications . Louisville, Kentucky.
Senior Account Manager. Account strategist, planner and manager for Kyocera Mita

1998— 2001. Lexmark International. Lexington, Kentucky. *US Manager of Advertising and Promotions.* Managed branding, marketing, advertising, public relations and events

1991— 1998. Lexington Hotel and Mall Corporation
Lexington, Kentucky. Marketing/Promotions Director. Managed budgeting, planning and execution of marketing, advertising, public relations and special events for regional convention, retail and hotel complex

1988— 1991. The Webb Companies. Lexington, Kentucky. *Vice President Marketing.* Directed all activities of in-house marketing department for national real estate developer.

1987— 1988. Studio Plus. Lexington, Kentucky
Marketing Director. Developed marketing strategy, branding and execution

1980 – 1987. Advertising Agencies. Lexington, Kentucky
Account Executive, Media Specialist, Public Relations Manager, Production Manager

Education

1973— 1979
Centre College, University of Kentucky, University of Kent, Penn State

BA, 1977 English Literature, Studio Art minor

MA, 1979 English Literature

RELATED PROJECTS

REMEMBERING THE PAST, DESIGNING THE FUTURE: DESIGN GUIDELINES FOR THE ENHANCEMENT AND CREATION OF ALZHEIMER'S GARDENS BY RYAN HARGROVE

This thesis project presented a set of design recommendations for the creation and enhancement of memory gardens for patients with Alzheimer's disease. The intent was to provide designers with a reference through which informed design decisions will be made, and in addition to offer caregivers a manual on how best to ensure optimal patient experience.

These objectives were accomplished by researching the current design guidelines, and performing a qualitative analysis of the experiences of caregivers and family members who know the disease intimately and accompany patients through the gardens. Using long interviews as a method of inquiry, selected participants fully expressed their feelings and elaborated on informed observations.

By evaluating the garden using qualitative methodology, information was gathered that either confirmed a guideline was consistent with prior research, or discovered a new guideline not previously considered. Overall, this study served the current and future users of the gardens by examining where the current guidelines succeeded and failed, and by proposing how new information might be incorporated. This created a foundation for additional research to address future design challenges as they develop.

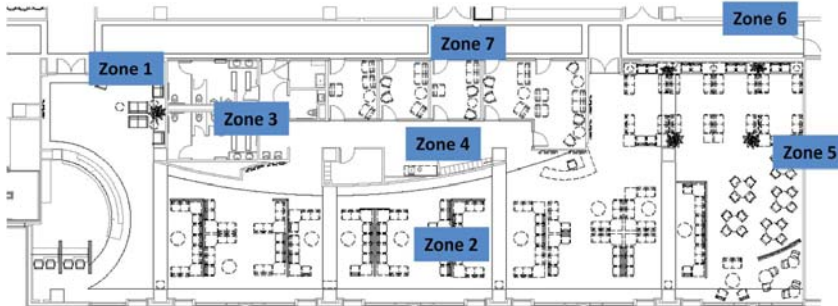


**UK ARTS IN HEALTH CARE PROGRAM
ALBERT B. CHANDLER HOSPITAL
LEXINGTON, KENTUCKY. 2005 - 2011**

Dr. Michael Karpf, Executive Vice President for Health Affairs, arrived in Lexington, KY on a mission to rebuild the UK medical center. Having just built a new hospital in LA, Dr. Karpf had seen the power of great architecture and art as healing components. When studies indicated that a new facility was necessary Dr. Karpf never imagined the new facility without art. An advisory Art Committee was formed to allow UK to tap into art expertise from the academic end of campus, business world and cultural richness of the community.

The program's mission is to create an environment of care and to focus on the spiritual and emotional well-being of our constituents. The program recognizes the arts and the artists as powerful and positive forces in the healing process. Health Care is changing. There is increased emphasis on patient satisfaction and creating a humane and healing environment. The arts provide the opportunity to look at and interact with the whole person as patient. Art can connect patients, families and caretakers in ways that science and medicine cannot. Health Care providers will be increasingly measured at this level of care.

The structure of the UK program is innovative in the field and promotes among others music therapy programs to work in conjunction with various clinical entities and ongoing integration of academic, research and clinical components.



Celebrate Kentucky Wall: a multimedia presentation of the seasons, places, and people of Kentucky to make our families, patients, and staff feel welcome and at home



Guy Kemper Mosaics



Chapel Glass. The Chapel was the second international call for a commission. Inspired by a donor, the call indicated her desire to have the glass reference springtime in Kentucky. John Reyntiens was selected among 5 finalist and worked closely with the donor to create the work.



Folk Art Canes

The Art Program worked closely with architects, interior designers, lighting designers, IT, and landscape architects to plan for art locations from the outset of the project. As a result the art is an integrated architectural element: it feels part of the building and emerges as you turn a corner or transition to a new space

Ginkgo. A central skylight was the location for an iconic sculpture that would be the focal point of the 30,000 sf atrium.





August 31, 2011

Facilities Management
Office of the Vice President
225 Frank D. Peterson Service Bldg.
Lexington, KY 40506-0005
859 257-5929
fax 859 323-2120
www.uky.edu

Open Spaces Sacred Places
TKF Foundation
410 Severn Ave., Suite 216
Annapolis, MD 21403

To whom it may concern:

I am writing this letter in support of the Department of Landscape Architecture's grant proposal to conduct the necessary activities for the planning - including design, research, and community involvement - to create an urban public green space on a site located at University of Kentucky's newly developed Fine Arts property linking campus and community. The proposed project site is a mix of parcels owned or in the process of acquisition by the University.

A strong multidisciplinary team including University of Kentucky faculty members from several disciplines, an award-winning national landscape architecture and urban planning firm, a renowned local landscape architecture firm, and surrounding community representatives among others will work together to create an urban public green space. I envision the creation of this urban space to be compatible with our University's commitment to improving the quality of life of the university population, the surrounding neighbors, and Kentuckians overall. This project has the potential to expand ongoing research initiatives and create new research opportunities for faculty members from several University departments for years to come. Therefore I support this extraordinary endeavor.

I give the proposed Open Space Sacred Place planning grant from the Department of Landscape Architecture my fullest support. Please contact me if I can be of any further assistance.

Sincerely,

A handwritten signature in black ink, appearing to read "Bob Wiseman".

Bob Wiseman
Vice President for Facilities Management



Open Spaces Sacred Places
TKF Foundation
410 Severn Ave., Suite 216
Annapolis, MD 21403

Office of the Dean and Director
College of Agriculture
5123 Ag. Science Building - North
Lexington, KY 40546-0091

859 257-4772
fax 859 323-2885
www.uky.edu

To whom it may concern:

I am writing this letter in support of the Department of Landscape Architecture's grant proposal to conduct the necessary activities for the planning - including design, research, and community involvement - to create an urban public green space on a site located at University of Kentucky's newly developed Fine Arts property linking campus and community.

A strong multidisciplinary team including University of Kentucky faculty members from several disciplines, an award-winning national landscape architecture and urban planning firm, a renowned local landscape architecture firm, and surrounding community representatives among others will work together to create an urban public green space. I envision the creation of this urban space to be compatible with our College's commitment to improving the quality of life of the university population, the surrounding neighbors, and Kentuckians overall. This project has the potential to expand ongoing research initiatives and create new research opportunities for faculty members from several University departments for years to come. Therefore I support this extraordinary endeavor.

I give the proposed Open Space Sacred Place planning grant from the Department of Landscape Architecture my fullest support. Please contact me if I can be of any further assistance.

Sincerely,

A handwritten signature in black ink that reads "Scott Smith". The signature is written in a cursive, flowing style.

Scott Smith, Ph.D.
Dean UK College of Agriculture



August 30, 2011

Open Spaces Sacred Places
TKF Foundation
410 Severn Ave., Suite 216
Annapolis, MD 21403

To whom it may concern:

I am writing this letter in support of the Department of Landscape Architecture's grant proposal to conduct the necessary activities for the planning - including design, research, and community involvement - to create an urban public green space on a site located at University of Kentucky's newly developed Fine Arts property linking campus and community.

A strong multidisciplinary team including University of Kentucky faculty members from several disciplines, an award-winning national landscape architecture and urban planning firm, a renowned local landscape architecture firm, and surrounding community representatives among others will work together to create an urban public green space. I envision the creation of this urban space to be compatible with our College's commitment to improving the quality of life of the university population, the surrounding neighbors, and Kentuckians overall. This project has the potential to expand ongoing research initiatives and create new research opportunities for faculty members from several University departments for years to come. Therefore I support this extraordinary endeavor.

I give the proposed Open Space Sacred Place planning grant from the Department of Landscape Architecture my fullest support. Please contact me if I can be of any further assistance.

Sincerely,

Ned Crankshaw
Professor and Chair
Department of Landscape Architecture



August 29, 2011

Open Spaces Sacred Places
TKF Foundation
410 Severn Ave., Suite 216
Annapolis, MD 21403

College of Fine Arts
Office of the Dean
202 Fine Arts Building
Lexington, KY 40506-0022

administration 859 257-1707
student affairs 859 257-1709
fiscal affairs 859 257-1708
fax 859 323-1050

www.uky.edu/FineArts

To whom it may concern:

I am writing this letter in strong support of the Department of Landscape Architecture's grant proposal to conduct the necessary activities for the planning -- including design, research, and community involvement -- to create an urban public green space on a site located at University of Kentucky's newly developed Fine Arts property linking campus and community.

A strong multidisciplinary team including University of Kentucky faculty members from several disciplines, an award-winning national landscape architecture and urban planning firm, a renowned local landscape architecture firm, and surrounding community representatives among others will work together to create an urban public green space. I envision the creation of this urban space to be compatible with our College's commitment to improving the quality of life of the university population, the surrounding neighbors, and Kentuckians overall. This project has the potential to expand ongoing research initiatives and create new research opportunities for faculty members from several University departments for years to come. Therefore I support this extraordinary endeavor.

I give the proposed Open Space Sacred Place planning grant from the Department of Landscape Architecture my fullest support. Please contact me if I can be of any further assistance.

Sincerely,

A handwritten signature in black ink, appearing to read "M. Tick". The signature is fluid and cursive, with a long horizontal stroke extending to the right.

Michael Tick, Ph.D.
Dean of the College of Fine Arts

c: M. Scott Smith, Dean of the UK College of Agriculture



September 8, 2011

Open Spaces Sacred Places
TKF Foundation
410 Severn Ave., Suite 216
Annapolis, MD 21403

To whom it may concern,

I am writing this letter in support of the Department of Landscape Architecture's grant proposal to conduct the necessary activities for the planning – including design, research and community involvement – to create an urban public green space on a site located at University of Kentucky's newly developed Fine Arts property linking campus and community.

Having just opened the first phase of the new UK Albert B. Chandler Hospital with an integrated arts in health care program, I fully understand the positive affect that art, and landscape as art, have on people at every age and from every walk of life. The UK Arts in HealthCare Program welcomes the opportunity to participate in this multidisciplinary team effort.

The creation of this urban space is parallel to green spaces just opened on the medical campus of the university and will provide further opportunity for research around the use of art and landscape to create a healing environment for our patients, families, faculty, students and staff.

I give the proposed Open Space Sacred Place planning grant from the Department of Landscape Architecture my fullest support. Please contact me if I can be of further assistance.

Dr. Michael Karpf

Executive Vice President for Health Affairs

DESIGN WORKSHOP FIRM PROFILE

Design Workshop is a landscape architecture, land planning, urban design and strategic services firm. We've been providing these services for over four decades to developers, property owners, government agencies and other clients engaged in improvements to the land. In our years of practice we have evolved a proprietary approach and distinct culture.

Our Services

Our range of services is comprehensive, embracing all of the key disciplines necessary for our planning and design assignments. We also offer capabilities in areas of specialization that provide expanded ease and value for our clientele.

Landscape Architecture

Land Planning

Urban Design

Planning Management

Strategic Services

Development Strategies

Graphic Communication and Design

Golf Course Design

LEED Compliance

Design Workshop is a firm born in the pursuit of ideas. While college classmates, founders Don Ensign and Joe Porter resolved to someday start their own landscape architecture firm. The opportunity came in 1969 when both assumed teaching positions in North Carolina. Early on they were invited to assist private sector clients, often engaging colleagues and students in a collaborative process they labeled "design workshops."

Over the last 40 years we've had the opportunity to expand the breadth and sophistication of our firm. Our experience ranges from master plans for counties, planned communities, urban centers and resorts, to detailed design for public parks, residences and roadways. We have continuously honed the collaborative dynamics of the workshops and the pursuit of the ideas and ideals that result in the best solutions for every assignment. This approach remains the hallmark of our firm.

The Austin, Texas, office of Design Workshop includes seven landscape architects, urban designers, community planners and facilitators. We are dedicated to our Texas communities and assisting them in changing for the needs of the 21st century. We are serious about landscape design and water consumption, long term operations and maintenance, while ensuring that our communities meet their full potential and are truly authentic.

Offices

Asheville

Aspen

Austin

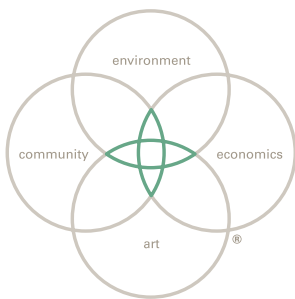
Denver

Lake Tahoe

Salt Lake City



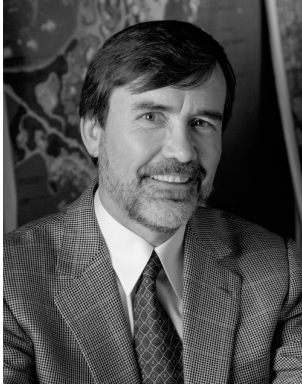
DW Legacy Design®



Today we express our mandate as a simple premise:

When environment, economics, art and community are combined in harmony with the dictates of the land and needs of society, magical places result. Places that lift the spirit. Sustainable places of timeless beauty, enduring quality and untold value – for our clients, for society and for the well being of our planet.

We call these extraordinary landscapes Legacy Projects. Our practice is dedicated to seeking solutions that move projects "Toward Legacy."



Education

Master of Business
Administration in Real Estate,
Southern Methodist University

Bachelor of Landscape
Architecture, Louisiana State
University

Licensure

Licensed Landscape Architect:
Alabama, Arizona, Florida,
Idaho, Louisiana, Nevada, New
Mexico, South Carolina, Texas,
Wyoming, Utah, Virginia

Certification

American Institute of
Certified Planners

LEED 2.0 Accredited
Professional

Professional Affiliations

American Society of Landscape
Architects (ASLA)

American Planning Association
(APA)

National Trust for Historic
Preservation

Urban Land Institute, Member,
Recreation Council

International Association of
Scientific Experts in Tourism

Awards and Honors

KURT CULBERTSON, FASLA, RLA, AICP, LEED® AP Principal

Partner and Principal of the landscape architecture and land planning firm Design Workshop, Kurt Culbertson has been instrumental in the company's success both nationally and internationally. He is currently leading the corridor redevelopment efforts of South Grand and Manchester Road in St. Louis. Culbertson has initiated the creation of a model "sustainable development," a community that promotes stability between both the physical and social systems. A strong proponent of the profession, Kurt has been published numerous times, spoken to organizations throughout the country, and participated in community activities.

In addition to his activities within the industry, Culbertson contributes to the community at large. As past chair of the Rocky Mountain Chapter of Young President's Organization, he currently serves as co-chair of the Cultural Landscape Foundation.

Selected Project Experience

Lafitte Greenway and Corridor Plan - New Orleans, Louisiana
Pflugerville Comprehensive Plan. Pflugerville, Texas
Avon Comprehensive Plan. Avon, Colorado
Vail Community Plan. Vail, Colorado
Avon Town Center. Avon, Colorado
Milliken County Comprehensive Plan. Milliken County, Colorado
Gates Redevelopment. Denver, Colorado
Aspen Community Plan. Aspen, Colorado
Whistler Sustainability Plan. Whistler, British Columbia Domain. Austin, Texas
St. Louis Great Streets. St. Louis, Missouri
Amaranth Village Center. Goodyear, Arizona
Earth University La Flor and Innovation Technology Center Master Plan. Liberia, Cost Rica
Biltmore Estates Master Plan. Asheville, North Carolina
Cherokee Gates Redevelopment. Denver, Colorado
Flathead County Master Plan. Flathead Lakes, Montana
High Desert. Albuquerque, New Mexico
Lionshead Redevelopment Master Plan. Vail, Colorado
Mariposa. Albuquerque, New Mexico
Missoula Riverfront Triangle. Missoula, Montana
Montage 690 Urban Design and Landscape Architecture. Goodyear, Arizona - USA
Ridgefield - Ridgefield, Washington
UMore Park - Rosemount, Minnesota

2009: Distinguished Alumni,
College of Art +Design,
Louisiana State University

2004: Layers of the Land
Competition, Charleston,
South Carolina, Merit Award

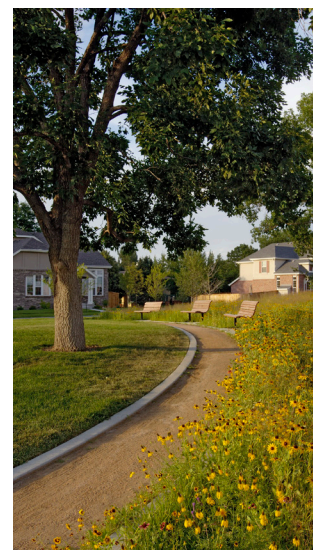
2004: Inn on Biltmore Estate,
Asheville, North Carolina
Chapter American Society of
Landscape Architects, Honor
Award

2003: Fellow, Institute for
Urban Design

2003: Crown Residence,
Aspen, Colorado Chapter
American Society of Landscape
Architects, Merit Award

2002: Wexner Residence,
Aspen, Colorado Chapter
American Society of Landscape
Architects, Honor Award

2000: Canyon Forest Village
Master Plan, Tusayan, Arizona,
American Society of Landscape
Architects - National Merit
Award



Lowry Parks — Denver, CO

4.2 KEY STAFF RESUMES

DESIGN WORKSHOP

REBECCA LEONARD, AICP, LEED-AP Principal



Education

Master of Urban and Regional Planning, Ball State University
Bachelor of Science in Environmental Design in Architecture, Ball State University

Certification

2010: Form Based Code Certification
2007: LEED-AP
2007: NCI Charrette Facilitator
1999: American Institute of Certified Planners

Public Meeting Facilitator and Charrette Planner/Manager, National Charrette Institute, 2007

Professional Affiliations

American Planning Association: Urban Design and Preservation Division and Small Town and Rural Planning Division
2005-2007 Board of Directors, Colorado Chapter of the American Planning Association

2005-2007 Board of Directors, Planning Institute of Colorado
2005-2007 Board of Directors, Healthy Mountain Communities

Form Based Code Institute Congress for the New Urbanism

Rebecca Leonard, a Principal of Design Workshop, has outstanding experience in the areas of community planning, urban design, redevelopment, tourism planning, regional planning and site design. Rebecca is a graduate of the Ball State University College of Architecture and Planning where she received her Master's Degree in Urban and Regional Planning. She focuses on projects that represent the heart of the community. Through her strategic initiative, she integrates in-depth knowledge of the area's environment, community and economy with strong physical design and public spaces.

Rebecca's experience in both the public and private sector of planning has given her insight not often found in the design profession. She has worked on community plans and designs in both capacities and knows how to face the inherent challenges posed by both perspectives. Rebecca believes that an excellent design is one that considers its context in all facets – environment, community, art and economy. Excellent designs lead to great communities!

Selected Project Experience

Lewisville Old Town Plaza — Lewisville, TX
Wimberley Blue Hole Regional Park — Wimberley, TX
Hardy Yards Park and Redevelopment Plan — Houston, TX
Lafitte Greenway and Corridor Plan - New Orleans, Louisiana
Hays County Park and Open Space - Hays County, Texas
Pflugerville Park and Open Space Plan - Pflugerville, Texas
Midtown District Parks and Master Plan - Houston, Texas
H-GAC Livable Centers: Fourth Ward — Houston, TX
H-GAC Livable Centers: Midtown TOD Plan — Houston, TX
Pflugerville Parks and Open Space Plan — Pflugerville, TX
Pflugerville Comprehensive Plan — Pflugerville, TX
Lewisville Transit Oriented Development Plan — Lewisville, TX
Lewisville Mill Street Plan — Lewisville, Texas
Hurst-Bellaire Redevelopment — Hurst, Texas
South First Redevelopment — Austin, Texas
The Domain — Austin, TX
Sioux City Design Guidelines — Sioux City, IA
Vail Community Plan — Vail, CO
Douglas County Master Plan — Minden, NV
Bricktown Redevelopment — Oklahoma City, Oklahoma
Broken Arrow Design Guidelines — Broken Arrow, Oklahoma
Miamisburg Downtown Enhancement Plan — Miamisburg, Ohio*
NDOT Landscape and Aesthetic Corridor Plan — State of Nevada
Springwoods Sustainability Strategy - Houston, Texas

Awards and Honors

2011: Award of Excellence for Wimberley Blue Hole Regional Park, Texas Chapter, American Society of Landscape Architects.

2010: Award of Excellence for Lewisville Old Town Plaza. Texas Chapter, American Society of Landscape Architects

2008: "Vernon Deines Award for Outstanding Small Town or Rural Plan" from the Small Town and Rural Planning Division of the American Planning Association for the Avon Comprehensive Plan

2005: National Association of Counties, Achievement Award for the Eagle County Comprehensive Plan

2003: National Association of Counties, Achievement Award for the Eagle County Profile Website

1999: Kentucky Chapter of ASLA, Honor Award for Henderson Downtown and Riverfront Improvements Plan

Speaking Engagements

"Customizing Design Guidelines to Community Needs" 2010 National American Planning Association Conference

"Everything You Need to Know About Proformas" 2010 National American Planning Association Conference
"Advances in Sustainable Tourism" 2008 National American Planning Association Conference

"The Renaissance Of Resort and Tourism Communities".
2007 National American

* Experience previous to Design Workshop

4.2 KEY STAFF RESUMES

DESIGN WORKSHOP

STEVEN SPEARS, RLA

Principal



Education

Master of Fine Arts in Design,
University of Texas at Austin

Bachelor of Landscape
Architecture, Ball State
University

Licensure

Licensed Landscape Architect,
Texas, Indiana, Colorado

Professional Affiliations

American Society of Landscape
Architects (ASLA),

American Planning Association
(APA)

Urban Land Institute (ULI)

Congress of New Urbanism
(CNU)

National Parks and
Conservation Association,

Speaking Engagements

"Customizing Design
Guidelines to Community
Needs" 2010 National
American Planning Association
Conference

"Advances in Sustainable
Tourism" 2008 National APA
Conference

"Renaissance in Recreational
Resorts" 2007 National APA
Conference"

"Stitching Downtown Plans
Together: The Breckenridge
Streetscape Plan". 2005
Colorado APA Conference

"Partnerships for Success
in Affordable Housing".
Queenstown New Zealand
Council 2006

Steven Spears, a Principal with Design Workshop, is a landscape architect and urban designer with over a decade of professional experience throughout the United States, Australia and New Zealand where he has designed and planned community parks, trails and regional recreation attractions. Additionally, his experience in landscape architecture, urban design and site planning has focused on placemaking. Steven's desire to balance the environmental, community, economic and artistic benefits in every project creates successful results.

Steven is a graduate of Ball State University's College of Architecture and Planning, and the University of Texas at Austin. His work in recreational community design has resulted in speaking engagements at several national conferences and in Queenstown, New Zealand.

Selected Project Experience

Lafitte Greenway and Corridor Plan - New Orleans, Louisiana
Austin PARD Aquatic Improvements - Austin, Texas
The Domain Central Park and Trails - Austin, Texas
The Domain Redevelopment - Austin, Texas
Old Town Plaza - Lewisville, Texas
Wimberley Blue Hole Regional Park - Wimberley, Texas
Midtown Park Improvements - Houston, Texas
Superblock Park - Houston, Texas
Glover Park - Houston, Texas
City Stormwater and Green Infrastructure Plan - New Braunfels, Texas
Midtown District Parks and Master Plan - Houston, Texas
Hays County Park and Open Space Master Plan - Hays County, Texas
South First Redevelopment Plan - Austin, Texas
H-GAC Midtown Livable Centers Redevelopment Plan - Houston, Texas
H-GAC 4th Ward Livable Centers Redevelopment Plan - Houston, Texas
Hardy Yards Redevelopment and TOD - Houston, Texas
Hurst Bellaire Redevelopment and Sustainability Plan - Hurst, Texas
Lewisville TOD Revitalization Plan and Greenway - Lewisville, Texas
The Gant Gardens — Aspen, Colorado
Avon Lake Street Promenade - Avon Colorado
Riverwalk Promenade Extension - Breckenridge, Colorado
Glenwood Canyon Trail Improvements Plan - Glenwood Springs, Colorado*
Glenwood Springs Trails Plan - Glenwood Springs, Colorado*
Carbondale Nature Park and Trails Plan - Carbondale, Colorado*
Coldstream Park, Greenway and Interpretive Plan - Lexington, Kentucky*
George Rogers Clark Greenway Concept Plan - Vincennes, Indiana*
Port Gamble Resettlement Plan - Port Gamble, Washington
Historic Rosalind Park and Greenway Master Plan - Bendigo, Victoria, Australia*
Bendigo Botanical Gardens - Bendigo, Victoria, Australia*

Honors and Awards

Award of Excellence for
Wimberley Blue Hole Regional
Park, Texas Chapter, American
Society of Landscape
Architects, 2011

Award of Excellence, Colorado
Chapter, American Society of
Landscape Architects, Trees
of Aspen Environmental Art
Installation, 2010

Award of Excellence for
Lewisville Old Town Plaza.

Texas Chapter, American
Society of Landscape

Architects, 2010

Colorado Chapter, American
Society of Landscape

Architects Design Award: Avon
Lake Street and Transit Center.
2009

Colorado Chapter, American
Planning Association

Outstanding Award of
Excellence: Avon West Town
Center Redevelopment Plan.
2009

ACEC Merit Award: Yorktown
Downtown Streetscape
Improvements. 2009

Woody Creek Garden. National
ASLA Design Award, 2007

The Legacy Design Guidelines.
Indiana ASLA Merit Award.
2007

** Experience previous to Design
Workshop*

WESTFIELD GRAND JUNCTION

Westfield, Indiana



Grand Junction is a redevelopment plan for downtown Westfield, an outer suburb of Indianapolis. Westfield is experiencing significant growth. Proposed INDOT transportation improvements will forever change the face of this once small town. Design Workshop is currently working with the City and the Grand Junction Task Force to create a plan and capital improvements that will spur public and private reinvestment focused on a 6-acre park that was part of a former railroad.

The project envisions the creation of a new city park, infill, streetscape improvements, trail design, wetland and stormwater improvements and the economic revitalization of their downtown.

Client:
City of Westfield, Indiana

Services Provided:
Facilitation and Outreach
Urban Design
Landscape Architecture



WESTFIELD GRAND JUNCTION
Westfield, Indiana



LAFITTE GREENWAY AND CORRIDOR PLAN

New Orleans, Louisiana



Design Workshop was hired to plan and design a long-anticipated greenway for a mostly derelict stretch of land connecting Mid-City, Tremé, the French Quarter and Lakeview, in New Orleans, Louisiana. The project includes designing a three mile greenway, 16.5 acre park and creating a revitalization plan for all land within a 1/4 mile of the corridor.

Transforming the Lafitte Corridor, a ribbon of land that passes through some of the city's most historic and Katrina-damaged neighborhoods, into an alternative transportation corridor will offer residents a valuable new amenity while reinvigorating surrounding communities. The plan envisions locals using the greenway for recreation and bicycle commuting, while tourists would make their way from their French Quarter hotels to City Park, the New Orleans Museum of Art and Bayou St. John. The corridor creates a transect through the cultural and historic heart of the City, thus prompting opportunities for recreational based heritage tourism.

The corridor runs along a former shipping channel that once connected the northern edge of the French Quarter with Bayou St. John. The canal was filled in 1938, and part of the site was converted to a rail line.

Plans to convert the largely abandoned, three-mile industrial strip into a public greenway have been floated since the 1970s, but the proposals never gained much traction. Now, the Lafitte Greenway will be seen as a success story in the aftermath of Hurricane Katrina offering the community recreational, economical, cultural and environmental benefits.



Services Provided:

Community Planning, Greenway Planning, Landscape Architecture, Construction Documentation, Bidding and Negotiation, Construction Administration, Public Facilitation and Community Outreach

Client:

City of New Orleans, Louisiana

LAFITTE GREENWAY CORRIDOR
New Orleans, Louisiana



Design Workshop, Inc.
Landscape Architecture
Land Planning
Urban Design
Strategic Services

August 29, 2011

OSSP
Open Spaces Sacred Places
TKF Foundation
410 Severn Ave., Suite 216
Annapolis, MD 21403

801 Congress Avenue
Suite 330
Austin, Texas 78701
512.499.0222

To whom it may concern,

This letter is to confirm that Design Workshop is pleased to provide Open Space Sacred Places with Landscape Architecture services for the above referenced project.

We look forward to working with you and your team should we be awarded the project.

Asheville
Austin
Aspen
Denver
Lake Tahoe
Phoenix
Salt Lake City

Sincerely,

A handwritten signature in black ink, appearing to read "Steven Spears". The signature is fluid and cursive, with a large initial "S" and a distinct "P" and "S".

Steven Spears, RLA
Principal

DESIGNWORKSHOP

CARMAN



CARMAN, formerly John L. Carman and Associates, was founded in 1980 with a philosophy of providing sensitive planning and design with an eye for the integration of technically sound responses to the natural and built environment. We have met the challenges of this philosophy with a broad range of experience with both the public and private sector. The commitment of our Landscape Architectural and Civil Engineering staff to each client has gained our firm the reputation of meeting unique demands of complex and challenging projects. Our staff listens to our clients and creates an understanding of their needs.

CARMAN has the experience and qualifications to approach an assignment in a comprehensive manner. We integrate creativity and technical expertise with an understanding of both small and large-scale environments. The integration of Landscape Architecture, Land Planning, Environmental Planning and Civil Engineering places our staff in a unique position to provide quality and timely consultation, creating Environments Fully Realized.

John Carman, President

The Council of Landscape Architectural Registration Boards ,
The National Council of Examiners for Engineering and Surveying,
Kentucky Erosion and Sediment Prevention Controls
and
The United States Green Building Council
have certified and accredited members of the staff of
CARMAN

CARMAN is Pre-Qualified by the Kentucky Transportation Cabinet, Department of Highways in
Rural and Urban Roadway Design and Bikeway Planning.

*"Nature goes on her way, and all that to us seems
an exception is really according to order."*

Johann Wolfgang von Goethe

CARMAN

The Landscape Architectural and Civil Engineering staff at CARMAN provides comprehensive site design, land planning, and site/civil engineering services to a broad spectrum of clientele. Our staff consists of the following personnel by specialized discipline:

Landscape Architects, Registered	7
Landscape Architectural Interns	1
Civil Engineer	1
Administrative Professionals	1

CARMAN's main office is located in Lexington, Kentucky with a satellite office located in Louisville, Kentucky. These two locations allow CARMAN to serve a broader geographical area without compromise to the time and attention we provide to our valuable clientele.

Professional Services Provided by CARMAN

The staff at CARMAN prides themselves in integrating a full range of site design services into their daily practice of improving the quality of both the natural and built environment. From the creation of a natural wildlife habitat to the development of a planned commercial centre, the experienced staff of Landscape Architects at CARMAN provides sensitive solutions to specific site conditions and user needs. Uses of the landscape including Recreational, Institutional, Industrial, Housing, Educational, and Municipal facilities are adapted and created by our staff within the context of their site without compromising efficient, economical design. Our firm provides quality consulting services to Federal, State, and Local Governments; private developers; school boards; and architects in an integrated team method to gain maximum results.

Strategies and directions for long-range comprehensive planning of an environment are fundamental to the success of the development of both large and small-scale environments. Our staff provides award-winning management and master plans for a variety of projects that are anticipated to be long-term in their development process. The foresight and perception of site development needs of a community, region, or specific environment are integrated into a planned scheme that is mapped into priorities, phases, and logical approaches for the best outcome. Large-scale industrial developments, university/college campuses, State Parks, and planned unit developments are all land uses that have been planned for long-range development by CARMAN. The ability to demonstrate specific impacts to long-range planning by performing Environmental Assessments, Scenic and Visual Assessments, Economic Feasibility, and Action Planning are all associated land planning functions offered by CARMAN.

As a comprehensive site design consultant, CARMAN offers Civil Engineering as a means to provide quality, functional design solutions. The Civil Engineering staff recognizes the need to engage technical workability into each and every design solution and strives to integrate pragmatic engineering needs of infrastructure, storm water management, and utilities without compromising quality design and insuring technically efficient results.

Federal I.D. #61-1033777



Landscape Architecture



Land and Urban Planning



Civil Engineering



John L. Carman, FASLA, RLA
resume



John L. Carman established the firm of CARMAN in 1980 after successful practice with companies providing service in Landscape Architecture, Engineering, and Construction Management in Lexington, Kentucky and Huntington, West Virginia. With this training to build upon, Mr. Carman has since established an award-winning firm that provides services to a wide variety of clientele. Mr. Carman prides himself in being a "hands-on" manager and is always very active in each phase of all projects.

John Carman's experience extending over a 35-year period has been with large and small-scale projects ranging from Educational Facility Planning, Community Planning and Design, Site Engineering, Athletic Facility Design, and Environmental Planning. Mr. Carman is acknowledged as being on the cutting edge with creative and technically superior site design, particularly in the areas of storm water management and supporting site improvements. Mr. Carman contributes routinely at the University of Kentucky Landscape Architecture Department as adjunct professor and guest lecturer in a variety of design, construction, and professional practice courses.

Mr. Carman has developed a Landscape Architectural, Urban Design and Civil Engineering practice that has extended over a broad spectrum of public and private areas of design and planning. His practice has extended Louisville where an office was established in 2007. Carman has had the opportunity to work throughout Kentucky and many other States throughout the southeast part of the country.

EDUCATION

B.S. Landscape Architecture
University of Kentucky, 1976

PROFESSIONAL REGISTRATION

Landscape Architect, states of:
Kentucky - #310, Ohio, North Carolina,
West Virginia
CLARB - #797

PROFESSIONAL AFFILIATIONS

American Society of Landscape Architects
Member, Fellow

Council of Landscape Architectural
Registration Boards (CLARB) -
National Board of Directors, Past President

Kentucky Landscape Architectural Registration
Board - Appointed 1989, 1994, 2006

KYDOT Paris Pike Design Review Task Force

University of Kentucky Life Time Alumnus
and Fellow

'The Masters' PGA Golf Tournament Marshal -
Augusta National 1989 - Present

CONTINUING EDUCATION

Engineering Methods for Improving Watershed
Quality

Incorporating Bioengineering Techniques in
Erosion and Sediment Control

Biotechnical Erosion Control Techniques:
Matching Techniques to Sites

Urban Stormwater Management

DPIC Contract Review and Revision

Urban Stormwater Management and Detention
Pond Design

Ecological Restoration

Harvard Graduate School of Design -
Golf Course Design Course

Green Roof Design Workshop

RELEVANT PROJECT EXPERIENCES

East Market Street Gallery District
Study
Louisville, Kentucky

Northern Kentucky University Loch
Norse Commons
Highland Heights, Kentucky

Meadowcrest Multi-Use Development
Lexington, Kentucky

Portland Wharf Interpretive Master
Plan
Louisville, Kentucky

2nd Street Streetscape and Yum Arena
Entertainment District
Louisville, Kentucky

Kentucky History Center and Old Gov-
ernor's Mansion Gardens and Plaza
Frankfort, Kentucky

Kentucky State University Student
Center Plaza
Frankfort, Kentucky

Jefferson Community and Technical
College Campus Master Plan
Louisville, Kentucky



PARALLEL EXPERIENCE
University of Kentucky
Public Art Trail and Open Space



The office of CARMAN, located primarily in Lexington, Kentucky and with a satellite office in Louisville, Kentucky has been involved in the planning and design of public open space areas in many settings, including extensive project design experience in the educational sector. Of significant importance to the U of K project is CARMAN's recent experience on the University of Kentucky campus and extensive experience in Lexington over the past 31 years. The following are representative projects that portray the experience of CARMAN that parallels the scope of work for the University of Kentucky Public Art Trail and Open Space project.

EAST MARKET STREET GALLERY DISTRICT CORRIDOR STUDY

Louisville, Kentucky

The East Market Street Gallery District Study is one of strategy and development – a plan that encompasses the feelings of its people and the direction forged by its landscape, architecture and culture. The four block section that has been studied in this Plan served as a foundation to development throughout the East Market District and in fact has become part of a comprehensive downtown development that a node of connectivity with many other important components of urban development. The endeavor to improve economic development through tourism, increased business participation and destination businesses has been paramount with the streetscape strategies and physical development.



NORTHERN KENTUCKY UNIVERSITY LOCH NORSE COMMONS

Highland Heights, Kentucky

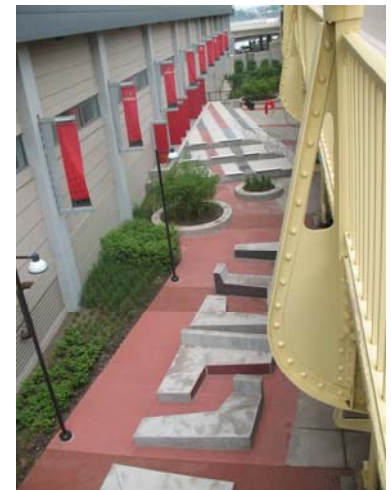
CARMAN provided planning, design and engineering for a campus commons for the primary academic core of Northern Kentucky University (NKU). The focus of the design is the development of a multi-level lake that has become a dominant visual feature as well as a space which provides areas for interactive enjoyment by campus staff, faculty, administration, students and visitors. The Loch Norse Lake Commons offers a means of interconnecting the various areas of the campus with an extensive system of walkways, nodes, plazas and a 150-foot bridge across the lake. Waterfalls connecting the pools of the lake provide both visual enhancements and pleasant sounds of falling water that further enhance the commons.



2nd STREET STREETScape AND YUM CENTER ENTERTAINMENT DISTRICT

Louisville, Kentucky

CARMAN's role as Landscape Architect and Engineer was to reveal and emphasize the richly layered landscape of 2nd and Washington. This area of 2nd and Washington Streets serves as the east portal to the new Yum Center and thus has become the entertainment area for event attendees in addition to special events for the waterfront area of Louisville. The unifying system for the design concept is the registration of the frequency of the masculine bridge columns and the juxtaposition of grids expressed in downtown Louisville. This organizing pattern serves as a datum from which objects, spaces and circulation corridors in the east end of Louisville emerge, and moments are intended to accommodate a variety of events, users and seasons. Deliberately designed spaces promote opportunities to gather, observe, converse, celebrate, contemplate, circulate and relax.



VAN METER PETTIT

EMPLOYMENT

- 1/2010 • PRESENT** **MANAGER, KENTUCKY CLEAN ENERGY CORPS.** LIASON FOR MULTIPLE PROJECTS ACROSS STATE GOVERNMENT RELATED TO ENERGY EFFICIENCY FROM A POSITION AT THE KENTUCKY HOUSING CORPORATION. THESE INCLUDE WEATHERIZATION ASSISTANCE, KENTUCKY HOME PERFORMANCE, AND STATEWIDE ENERGY AUDITOR TRAINING. CURRENTLY TRACKING AND COMPILING STATE-OF-THE-ART ENERGY EFFICIENT BUILDING INITIATIVES ACROSS THE STATE. WORKING WITH A TEAM AT KENTUCKY HOUSING ON SUSTAINABILITY PLANNING.
- 7/99 • 12/2009** **REGISTERED ARCHITECT, LEXINGTON KENTUCKY.** SOLO PRACTITIONER IN RESIDENTIAL DESIGN. NEW NEIGHBORHOOD DESIGN AND DEVELOPMENT, WITH AN EMPHASIS ON LAND CONSERVATION, URBAN-INFILL, AND HISTORIC PRESERVATION. MULTIPLE PROJECTS HAVE BEEN PUBLISHED. LICENSED MEMBER OF THE A.I.A. SINCE APRIL 2003.
- 8/00 • 5/01** **PART-TIME ARCHITECTURE INSTRUCTOR AT THE UNIVERSITY OF KENTUCKY.**
- 1/96 • 7/99** **INTERNSHIP AT OMNI ARCHITECTS, LEXINGTON, KY.** TEAM MEMBER ASSISTING IN DESIGN DEVELOPMENT FOR A VARIETY OF LARGE-SCALE INSTITUTIONAL PROJECTS.

EDUCATION

M.ARCH., UNIVERSITY OF TEXAS AT AUSTIN. GRADUATED MAY 1997.

B.A. ART HISTORY AND VISUAL ARTS, PRINCETON UNIVERSITY, PRINCETON, NEW JERSEY. GRADUATED JUNE 1989.

PROFESSIONAL CERTIFICATION

AIA, NCARB, BPI BA, GREEN ADVANTAGE

AWARDS

- 2009-2010** **COMMERCE LEXINGTON. LEADERSHIP LEXINGTON DISTINGUISHED LEADER.**
- 2009** **BLUEGRASS TOMORROW VISION AWARD FOR TOWN BRANCH TRAIL, INC.**
- 2005** **LFUCG ENVIRONMENTAL AWARD FOR TOWN BRANCH TRAIL, INC.**

PUBLIC SERVICE

- 1999 • PRESENT** **FOUNDER AND PRESIDENT OF TOWN BRANCH TRAIL, INC.,** A 501-C-3 ORGANIZATION SERVING LEXINGTON IN PLANNING AND FUNDING FOR AN 8-MILE URBAN GREENWAY THAT WILL CONNECT DOWNTOWN LEXINGTON WITH MAJOR LANDMARKS AND UNIQUE EQUINE LANDSCAPE ALONG AN HISTORIC URBAN CREEK. TWO MILES ARE COMPLETE AND \$4.5M IN FUNDING TO DATE. RECOGNIZED AS AN ESSENTIAL COMPONENT OF MULTIPLE MASTERPLANS FOR LEXINGTON. (WWW.TOWNBRANCH.ORG)
- 2010 • PRESENT** **STEERING MEMBER OF ENERGY AND INNOVATION ROUNDTABLE.** STATEWIDE INITIATIVE TO UNITE LEADERSHIP IN ENERGY INNOVATION.
- 2004 • 2009** **LFUCG GREENSPACE COMMISSION, BOARD MEMBER.**
- 1986 • 1990** **SERVICE WORK IN AFRICA AND ASIA DURING AND AFTER STUDY AT PRINCETON.**